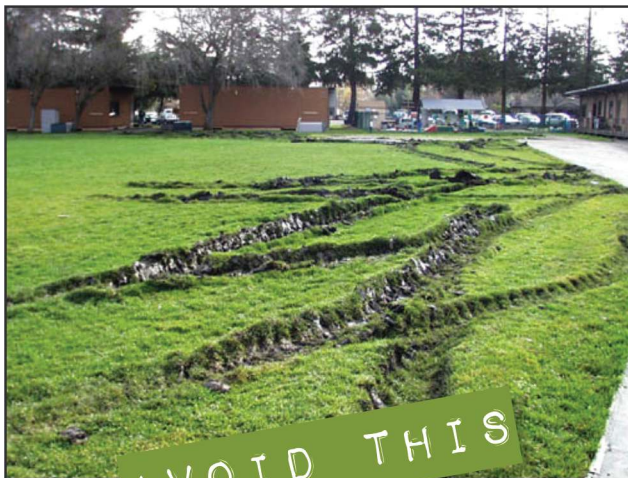


GroundMatz temporary roadway protection panels are a quick and affordable solution.

With a unique anti-slip traction pattern, our panels will help prevent expensive damage and reinstatement costs to grassed or sensitive outside areas.

Our GroundMatz trackway panels are used daily throughout the UK across a wide range of industries including civil engineering, landscaping, golf course and sports field maintenance, holiday home parks, heritage and archaeological sites and a multitude of other applications. This enables more efficient and safer working conditions whilst at the same time promoting a more professional image to clients and customers.



FEATURES

- Easily handled and laid by two men – no need for expensive crane wagons
- Dual purpose - traffic and pedestrian sides
- Lay as two parallel tracks or a single roadway
- Extremely durable to withstand vehicle weights up to 40 tonnes*
- Easily cleaned due to less aggressive lug pattern
- Link together with steel joiners, HD cable ties or plastic links
- 'U' joiners available for use on sloping or cambered ground
- Use over and over – lasts for many years
- Tested in extremes of hot and cold climates



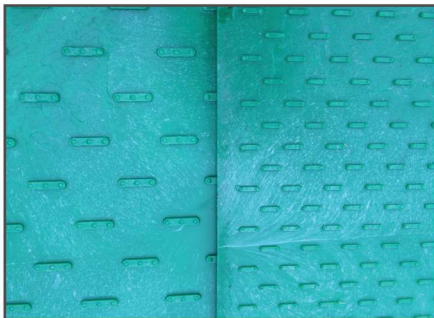
*subject to the bearing pressure of the underlying ground

Data Sheets, Installation & Design Guidances
and Case Studies can be downloaded from www.groundtrax.com/downloads

GROUNDMATZ

GROUND PROTECTION MATS

GROUNDTRAX



Single Steel Joiner



Double Steel Joiner



Steel U-Joiner



Single Low Profile Joiner



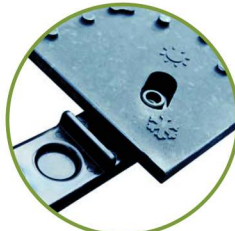
HD Cable Tie



2-Way Bolt Joiner



4-Way Bolt Joiner



In addition to our standard joiners we offer simple, secure, bolt-in joiners.

Dimensions:	2470mm x 1235mm x 14mm
Material:	High Density Polyethylene
Colour:	Dark Grey
Weight:	38kg
Pallet Dimensions:	2470mm x 1235mm x 680mm <i>(inc. pallet)</i>
Pallet Quantity:	30 Panels
Pallet Weight:	1140kg



For more information, contact us today or visit our website:

www.groundtrax.com

GROUNDTRAX
Ground Protection and Reinforcement
Telephone: 03456 800008 | Fax: 03456 800208
E-Mail: info@groundtrax.com | Website: www.groundtrax.com